

# OpenModelica Connectors

**Spoken Tutorial Project**

**<http://spoken-tutorial.org>**

**National Mission on Education through ICT**

**<http://sakshat.ac.in>**

**Kaushik Datta & Priyam Nayak**

**IIT Bombay**

**4 December 2016**



# Learning Objectives

# Learning Objectives

**In this tutorial, we will learn,**

# Learning Objectives

In this tutorial, we will learn,

- ▶ Create a new **class**

# Learning Objectives

In this tutorial, we will learn,

- ▶ Create a new **class**
- ▶ Open an existing **class**

# Learning Objectives

In this tutorial, we will learn,

- ▶ Create a new **class**
- ▶ Open an existing **class**
- ▶ Connect different **classes**

# Learning Objectives

In this tutorial, we will learn,

- ▶ Create a new **class**
- ▶ Open an existing **class**
- ▶ Connect different **classes**
- ▶ Build a **model**

# Learning Objectives

In this tutorial, we will learn,

- ▶ Create a new **class**
- ▶ Open an existing **class**
- ▶ Connect different **classes**
- ▶ Build a **model**
- ▶ Simulate the **model**



# System Requirement

# System Requirement

- ▶ **OpenModelica v 1.11.0**

# System Requirement

- ▶ **OpenModelica v 1.11.0**
- ▶ **Ubuntu Linux OS 14.04**

# System Requirement

- ▶ **OpenModelica v 1.11.0**
- ▶ **Ubuntu Linux OS 14.04**
- ▶ **Any OS: Linux, Windows, Mac OS X or FOSSEE OS on ARM.**

# Pre-requisites

# Pre-requisites

- ▶ about **OMEdit**
- ▶ The prerequisite tutorials are mentioned on our website,  
[www.spoken-tutorial.org](http://www.spoken-tutorial.org)

# Code Files

# Code Files

- ▶ **RLC\_Circuit** file is provided as code files on our site



# Code Files

- ▶ **RLC\_Circuit** file is provided as code files on our site
- ▶ Download the files from **Code Files** link

# Connectors

# Connectors

- ▶ A **connector** is a way for one model to exchange information with another model

# Use of Connectors

# Use of Connectors

**Connectors** are used in,

# Use of Connectors

**Connectors** are used in,

- ▶ **Connections**
- ▶ **Communications and**
- ▶ **Coupling between components and outside world**

# Summary

We have learnt,

- ▶ Create a new **class**
- ▶ Open an existing **class**
- ▶ Connect different **classes**
- ▶ Build a **model**
- ▶ Simulate the **model**

# Assignment

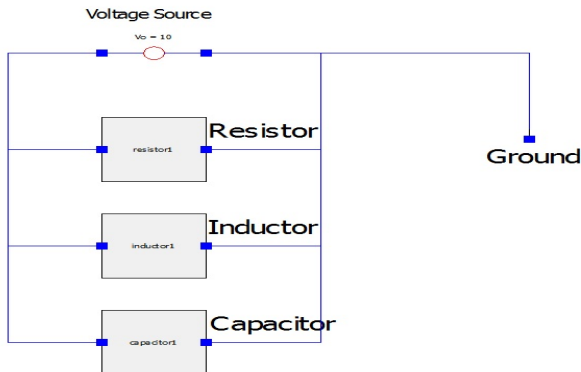
As an assignment,

- ▶ Construct a **RLC Circuit** where **Resistor Inductor** and **Capacitor** are in **parallel connection**
- ▶ Use the same **classes** and **connector** available with the package **RLC\_Circuit**



# Assignment Circuit Diagram

## RLC Circuit in Parallel



# About the Spoken Tutorial Project

- ▶ Watch the video available at [http://spoken-tutorial.org/What\\_is\\_a\\_Spoken\\_Tutorial](http://spoken-tutorial.org/What_is_a_Spoken_Tutorial)
- ▶ It summarises the Spoken Tutorial project

# About the Spoken Tutorial Project

- ▶ Watch the video available at [http://spoken-tutorial.org/What\\_is\\_a\\_Spoken\\_Tutorial](http://spoken-tutorial.org/What_is_a_Spoken_Tutorial)
- ▶ It summarises the Spoken Tutorial project
- ▶ If you do not have good bandwidth, you can download and watch it

# Spoken Tutorial Workshops

## The Spoken Tutorial Project Team,

- ▶ Conducts workshops using spoken tutorials
- ▶ Gives certificates to those who pass an online test
- ▶ For more details, please write to [contact@spoken-tutorial.org](mailto:contact@spoken-tutorial.org)

# Forum for specific questions

- ▶ Do you have questions in this Spoken Tutorial?
- ▶ Please visit <http://forums.spoken-tutorial.org>
- ▶ Choose the minute and second where you have the question
- ▶ Explain your question briefly
- ▶ Someone from the FOSSEE team will answer them



# Textbook Companion Project

- ▶ **The FOSSEE team coordinates coding of solved examples of popular books**
- ▶ **We give honorarium and certificates for those who do this**
- ▶ **For more details, please visit this site**  
**<http://om.fossee.in/textbook-companion-project>**

# Lab Migration Project

- ▶ **The FOSSEE team helps migrate commercial simulator labs to OpenModelica**
- ▶ **We give honorarium and certificates for those who do this**
- ▶ **For more details, please visit this site**  
**<http://om.fossee.in/lab-migration-project>**



# Acknowledgements

- ▶ **Spoken Tutorial and FOSSEE projects are funded by NMEICT, MHRD, Government of India**



# Thanks

- **Thanks for joining**